



NX8 Consumer Unit

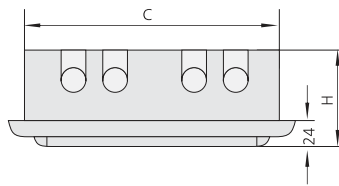
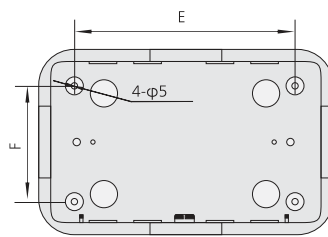
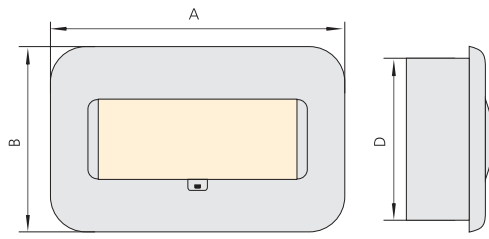
1. General

- 1.1 Electric ratings: up to 100A, 230V, AC50/60Hz;
- 1.2 No. Of mounted units: 5, 8, 12, 15, 20, 24;
- 1.3 On-load current (A): 100/1-phase; 63/3-phase;
- 1.4 Allowable temperature-rise of frame (k): 40;
- 1.5 Protection degree: IP30;
- 1.6 Standard: IEC/EN 60439-3

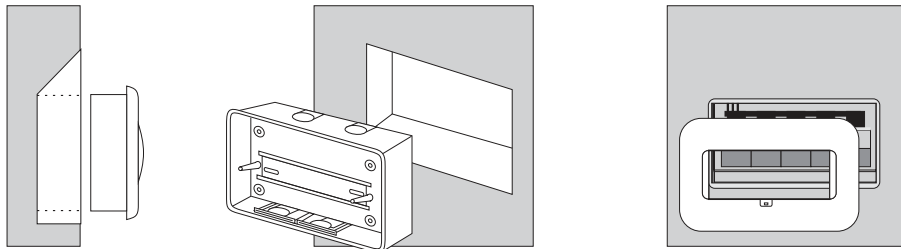
2. Features

- 2.1 The window of the consumer unit is designed with novel appearance and convenient operation. Open and close operation is flexible, and self-locking at the open status;
- 2.2 Inside the product, there is a neon indicator light to indicate status of power supply; having a elegant appearance and clear indication;
- 2.3 The interiorly mounted MCBs are all in compliance with relative IEC standards, 9mm modularized electric components are applicable, as well;
- 2.4 On request, various circuit combinations can be assembled; and the mounting capacity of the product units can be taken to 5~24 units;
- 2.5 Convenient and reliable operation, having exposed handle, and all live parts to be mounted inside the wall box ;
- 2.6 The consumer unit is designed with internal terminal blocks for connection of neutral line and protective grounding wire.
- 2.7 The enclosure of the unit is made of plastic material with metal structure;
- 2.8 On request, specified colors are available.

3. Overall and Mounting Dimensions (mm)



Model	A	B	C	D	E	F	H	Remark
NX8-5	184±0.88	200±0.88	164±0.8	180±0.88	114±0.57	130±0.64	105±0.57	Single-row
NX8-8	238±1.05	200±0.88	218±0.96	180±0.88	168±0.8	130±0.64	105±0.57	Single-row
NX8-12	310±1.25	200±0.88	290±1.25	180±0.88	240±1.05	130±0.64	105±0.57	Single-row
NX8-15	364±1.55	200±0.88	344±1.4	180±0.88	294±1.25	130±0.64	105±0.57	Single-row
NX8-20	274±1.15	350±1.4	254±1.15	330±1.4	204±0.96	280±1.25	105±0.57	Double-rows
NX8-24	310±1.25	350±1.4	290±1.25	330±1.4	240±1.05	280±1.25	105±0.57	Double-rows
NX8-5J	184±0.88	200±0.88	164±0.88	180±0.88	114±0.57	130±0.64	105±0.64	Single-row
NX8-8J	238±1.05	200±0.88	218±0.96	180±0.88	168±0.8	130±0.64	105±0.64	Single-row
NX8-12J	310±1.25	200±0.88	290±1.25	180±0.88	240±1.05	130±0.64	105±0.64	Single-row
NX8-15J	364±1.55	200±0.88	344±1.4	180±0.88	294±1.25	130±0.64	105±0.64	Single-row
NX8-20J	274±1.15	350±1.4	254±1.15	330±1.4	204±0.96	280±1.25	105±0.64	Double-rows
NX8-24J	310±1.25	350±1.4	290±1.25	330±1.4	240±1.05	280±1.25	105±0.64	Double-rows



4. Ordering Information

Model	Number of circuits	Iron base	Order Code	
			Standard	RoHS
NX8	5	No	151101	971259
NX8	5	Yes	151102	971260
NX8	8	No	151103	971261
NX8	8	Yes	151104	971262
NX8	12	No	151105	971263
NX8	12	Yes	151106	971264
NX8	15	No	151107	971265
NX8	15	Yes	151108	971266
NX8	20	No	151109	971267
NX8	20	Yes	151110	971268
NX8	24	No	151111	971269
NX8	24	Yes	151112	971270